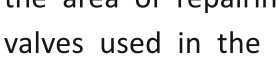




PSK PETRO SANAYE FARA TOSE'E KAREN CO.

Manufacturer Of Oil, Gas and Petrochemical Industrial Valves



INTRODUCTION

This company has initiated its operation under name of PETRO SANAT MADDEN in the area of valve manufacturing industry, and in the field of repairing and renovation of the valves used in petrochemical and refinery industries in special, since 2013. In doing so, the company's name was changed to PETRO SANAYE FARA TOSE'E KAREN under PSK Trading Brand designed gate valves in 2 to 12 inches, class 150, in year 2017.

In 2018 this company commissioned its production line to manufacture the check valves in 2 to 6 inches, class: 150 and gate valves in 2 in 6 inches, class: 300 as well.

This company is capable of producing trim numbers for gate valves and check valves according to API 600 and BS 1868.

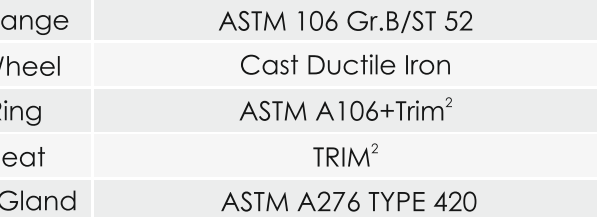
REPAIRS & RENOVATION

This company relying on its qualified and ask skilled personal as well as acceptable facilities in the area of repairing and renovating industrial valves used in the refinery and petrochemical complexes has been known as one of the leading specialized and qualified companies in oil, gas and petrochemical industries. Indeed, this company by use of the latest available standards repairs the valves.

CAST STEEL GATE VALVES

Gate valves are the most commonly used shut-off valves in industry today. They are used where minimum pressure drop and bi-directional on-off service is required. Gate valves are not designed for throttling service. Prolonged use in the partially open position may lead to premature wear and damage to the seating surfaces.

Our standard offering has a rising stem with an outside screw and yoke.

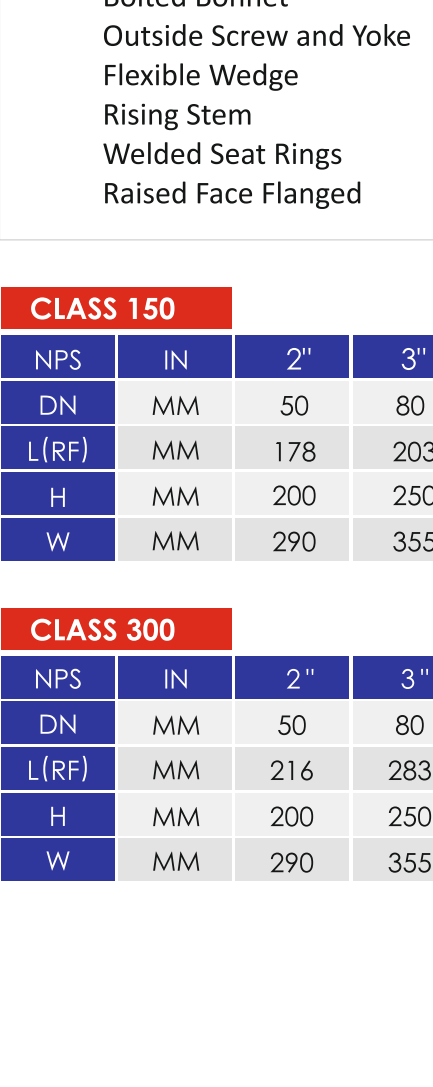


DESIGN

PSK cast steel wedge gate valve have been designed to meet the requirement to American petroleum institute standard API 600 and generally conform to American National Standard ANSI B16.34 Face and Face and End to End dimension conform to ANSI B16.10

End flange dimension conform to ANSI B16.5

Inspection and test in accordance with API 598



MATERIALS

- Option available for materials to meet
- NACE MR0175 requirement.

No	Parts	Materials
1	Body	ASTM A216 Gr.WCB ¹
2	Bonnet	ASTM A216 Gr.WCB ¹
3	Stem	TRIM ²
4	Wedge	ASTM A216 Gr.WCB+Trim ²
5	Stem Nut	UNS C95800 or C95200
6	Gland Flange	ASTM 106 Gr.B/ST 52
7	Hand Wheel	Cast Ductile Iron
8	Seat Ring	ASTM A106+Trim ²
9	Back Seat	TRIM ²
10	Packing Gland	ASTM A276 TYPE 420
11	Gasket	Graphite Sheet+S.S Wire/Spiral Wound
12	Packing	Braided Graphite
13	Hand Wheel Nut	Carbon Steel
14	Nut & Eye Bolt	ASTM A307 Gr.B
15	Nut & Stud Bolt	ASTM A193 & ASTM A194
16	Grease Nipple	Assembly
17	Yoke Cap	ASTM A106
18	Pin	Carbon Steel
19	Name Plate	Stainless Steel
20	Pipe Cap	Plastic



SPECIFICATION

Bolted Bonnet
Outside Screw and Yoke
Flexible Wedge
Rising Stem
Welded Seat Rings
Raised Face Flanged

APPLICABLE STANDARDS

Design : API 600
End Flange : ANSI/ASME B16.5
Face-to-Face : ANSI/ASME B16.10
Shell and Seat Test : API 598

CLASS 150

NPS	IN	2"	3"	4"	6"	8"	10"	12"	14"	16"
DN	MM	50	80	100	150	200	250	300	350	400
L(RF)	MM	178	203	229	267	292	330	356	381	406
H	MM	200	250	300	300	350	400	450	500	550
W	MM	290	355	430	570	710	855	995	1128	1293

CLASS 300

NPS	IN	2"	3"	4"	6"	8"
DN	MM	50	80	100	150	200
L(RF)	MM	216	283	305	403	419
H	MM	200	250	250	350	450
W	MM	290	355	430	640	915

CAST STEEL SWING CHECK VALVES

Swing Check valves are self-actuated. They are used to prevent flow reversal in piping systems. They are suitable for service in the horizontal and the vertical orientation (flow up through valve). Swing check valves have low pressure drop characteristics and are best suited for moderate velocity applications. There is no tendency for the seating surfaces of swing check valves to gall or score, this is due to the fact that the disc meets the flat seat squarely and there is no rubbing upon contact.

BODY

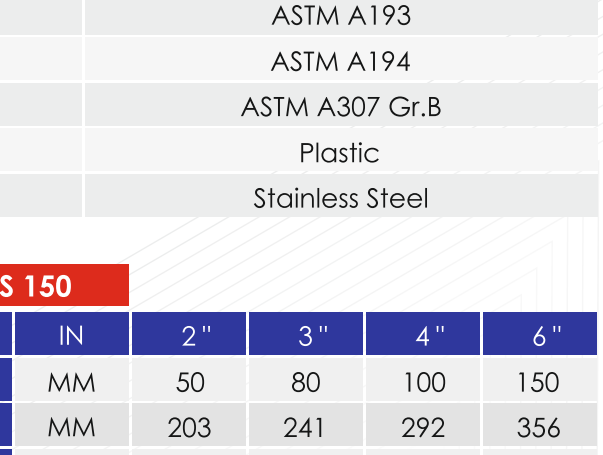
Spherical body with large radius, allows stress and turbulence to be minimized Strong construction assures safety, even above pressure and temperature limits.

BODY-BONNET JOINT/GASKET

Range of materials to suit pressure classes

DISC

Designed to close on its own weight to stop backflow.



WELDED-SEAT RING TO BODY

Seat ring is seal welded to eliminate potential paths.

END CONNECTIONS

As standard production covers valves with: Flanged ends to ANSI/ASME B16.5 RF raised face serrated finish or on request, with any other type of finish, RTJ Ring Type Joint Others

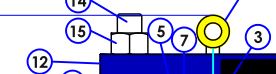
FACE TO FACE

Face to face dimensions to ANSI/ASME B16.10

TESTING

Standard testing is in accordance with API 598.

Customer specific testing by agreement.



SPECIFICATION

Bolted Cover
For Horizontal or Vertical Lines (Up Flow Only)
Welded Seat Ring
Raised Face Flanged Ends

APPLICABLE STANDARDS

Design: BS 1868
End Flange: ANSI/ASME B16.5
Face-to-Face: ANSI/ASME B16.10
Shell and Seat Test: API 598

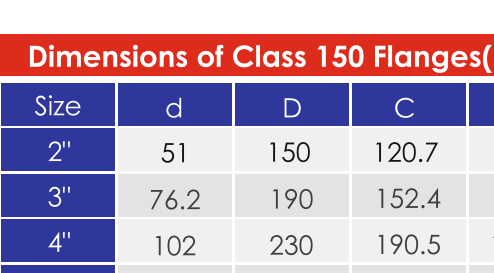
MATERIALS

Option available for materials to meet NACE MR0175 requirement.

No	Parts	Materials
1	Body	ASTM A216 Gr.WCB ¹
2	Seat Ring	ASTM A106+Trim ²
3	Hinge Holder	ASTM A216 Gr.WCB
4	Hinge	ASTM A216 Gr.WCB
5	Hex Socket HD Cap Screw	Carbon Steel
6	Pin	ASTM A194
7	Spring Lock Washer	Carbon Steel
8	Disc	ASTM A216 Gr.WCB+Trim ²
9	Washer	Carbon Steel
10	Slotted Hex Nut	ASTM A194
11	Cotter Pin	Carbon Steel
12	Cover	ASTM A216 Gr.WCB or st 52
13	Gasket	Graphite Sheet+S.S Wire/Spiral Wound
14	Stud Bolt	ASTM A193
15	Nut	ASTM A194
16	Lifting Eye Bolt	ASTM A307 Gr.B
17	Pipe Cap	Plastic
18	Name Plate	Stainless Steel

CLASS 150

NPS	IN	2"	3"	4"	6"
DN	MM	50	80	100	150
RF	MM	203	241	292	356
H	MM	165	186	217	266



Dimensions of Class 150 Flanges(mm)

Size	d	D	C	g	t	f	n - h
2"	51	150	120.7	92.1	17.5	2	4-19.1
3"	76.2	190	152.4	127	22.3	2	4-19.1
4"	102	230	190.5	157.2	22.3	2	8-19.1
6"	152.5	280	241.3	215.9	23.9	2	8-22.4
8"	203.2	345	298.5	269.9	27	2	8-22.4
10"	254	405	362	269.9	28.6	2	12-25.4
12"	305	485	431.8	269.9	30.2	2	12-25.4

Dimensions of Class 300 Flanges(mm)

Size	d	D	C	g	t	f	n - h
2"	51	165	127	92.1	20.7	2	8-19.1
3"	76.2	210	168.3	127	27	2	8-22.4
4"	102	255	200	157.2	30.2	2	8-22.4
6"	152.5	320	269.9	215.9	35	2	12-22.4
8"	203.2	380	330.2	269.9	39.7	2	12-25.4



PETRO SANAYE FARA TOSE'E KAREN CO.

Petro.sanaye.karen@gmail.com 3819958388

086 34 13 16 08 086 34 13 15 92 - 086 34 13 16 36

No.8388,Poolad 2,Street, Emam Ali St.Sanat Ave,Haji Abad Industrial Town,Arak City,Markazi Province,Iran

